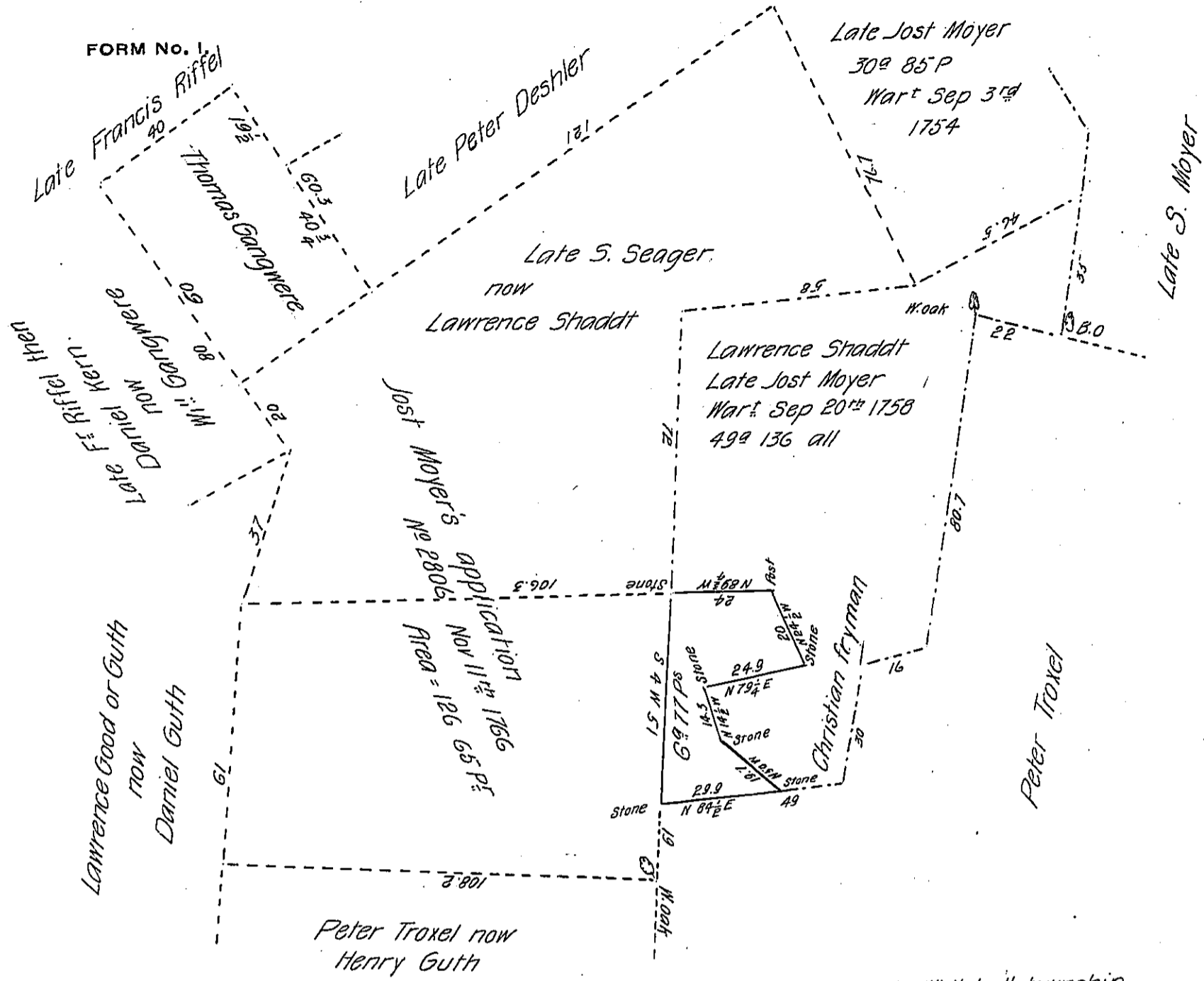


FORM NO. 1



A draught of a tract of land situated in South Whitehall township

Lehigh County. Containing Six acres and seventy seven perches and allowance. It being a part of a tract Containing forty nine acres and one hundred and thirty six perches and allow. Originally Surveyed unto Jost Moyer on a Warrant dated the 20th day of September A. D. 1758.

Now Returned for Henry Guth separate. May 10th A. D. 1837.

P: A. K. Wittman D. S.

John Taylor Esq: S. G.

IN TESTIMONY that the above is a copy of the original remaining on file in the Department of Internal Affairs of Pennsylvania, made conformably to an Act of Assembly approved the 16th day of February, 1833, I have hereunto set my Hand and caused the Seal of said Department to be affixed at Harrisburg, this second day of March 1906

Isaac R. ...
Secretary of Internal Affairs.